

LIFESLING[®] **INFLATABLE**

Patented

Overboard Rescue System for Powerboats and Sailboats

New!

1 Provide Flotation



Lifesling and retrieving line are stowed in a hard case

2 Make Contact



The crew member is secured and pulled to the boat

3 Hoist Aboard



Used as a lifting sling

LIFESLING[®] INFLATABLE

Patented

Crew Overboard Rescue System

- The Lifesling and line are stored for protection and easy deployment in a fiberglass case fastened to stern rail or bulkhead
- Graphics illustrate the rescue system
- 125' (38m) of 5/16" (8mm) diameter floating high-visibility retrieving line
- Lifesling Inflatable is designed to be thrown, yet can be towed by its retrieval line to the crew overboard. No swimming is required, eliminating the danger of contact with the hull and propeller.

- Case dimensions 9 1/4" w x 5 3/8" d x 12" h (24 x 14 x 31cm)



- Easy to get into because of its flexibility and design
- Once in Lifesling Inflatable, the crew overboard is secured to the vessel with no further demand on his/her capabilities
- Use as a lifting sling if the crew overboard is unable to get out of the water

- 25lbs. (111Nm) of buoyancy with CO₂ cartridge



- Combined functionality of horseshoe buoy with the throwability of a rescue throw rope for an accurate toss to the crew member

Lifesling Inflatable #1268911

Rearming Kit #6975999

Contains everything needed to properly re-arm Lifesling Inflatable.

- 1- Halkay Roberts Super Bobbin
- 1- Green Indicator Clip
- 1- 24 gram CO₂ cartridge

Lifesling Accessories

3-to-1 Lifesling Hoisting Tackle for Sailboats

Custom-made tackle, with the help of a winch, provides the mechanical advantage to hoist someone out of the water. Includes a fiddle block, a single block with carabiner, 65' (19.8m) of 3/8" (10mm) dacron braid, a nylon storage bag and instructions.

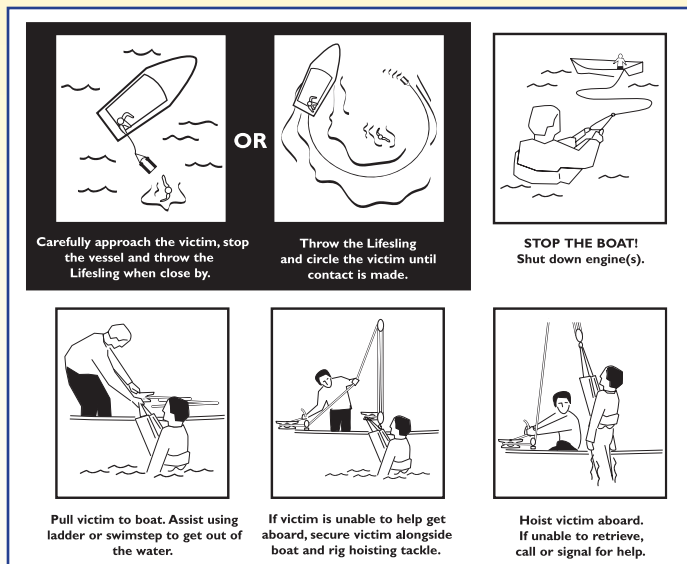
#561100



5-to-1 Hoisting Tackle for Powerboats

This is the easiest and quickest way to get your crew member back onboard without the use of a winch. Lifting tackle has a 5:1 purchase and a triple block with downward facing cam cleat for securing the line. Large carabiner snaps allow attachment to Lifesling and vessel. Includes 100' (30.5m) of 3/8" (10mm) dacron braid, a vinyl storage bag and instructions.

#595720



LIFESLING[®]

500 Westridge Dr.
Watsonville, CA 95076